

Breearley Nursery School

Returning to nursery
Post Covid19 Lockdown



Welcome Back! Children!

Table of Contents

Page 3	Returning to nursery
Page 4	Meet the staff in your child's bubble/group Session days and times for your child
Page 5 & 6	Organisation of drop off and pick up
Page 7	Drop off and collection route map
Page 8	Behavior and expectation
Page 9 & 10	Prepare your child for what to expect at nursery
Page 11 & 12	Hygiene
Page 13	What will happen if there is any illness
Page 14	What will happen if anyone in my household has symptoms?
Page 15	PPE
Page 16	Breakfast and afterschool clubs Additional items from home Medical needs
Page 17	No toys from home Communication with nursery
Page 18	Please do not send your child if unwell
Page 19	Engage with the NHS Test& Trace
Page 20	Contact details for School



Returning to Nursery

- Now, the circumstances have changed. The coronavirus (COVID-19) has decreased, our NHS Test and Trace system is up and running, and we are clear about the measures that need to be in place to create safer environments within schools.
- Returning to school is vital for children's education and for their wellbeing.
- Time out of school is detrimental for children's cognitive and academic development, particularly for disadvantaged children.
- This impact can affect both current levels of learning and children's future ability to learn, and therefore we need to ensure all pupils can return to school sooner rather than later.
- We encourage our parents to walk their children to school for good health and wellbeing.

NHS "TEST AND TRACE"
WHAT DO I NEED TO DO?

Do you show symptoms? Immediately self-isolate if you have experienced symptoms: persistent cough, fever, loss of smell or taste.	Get tested. Go online to nhs.uk/coronavirus or ring the NHS on 111 to arrange a test. If your results are positive, a trained advisor will interview you to figure out who you've been in close contact with.	Close contact means: *Those who have been within one metre. *Those who have been within two metres for 15 minutes or more. *People in your household.	A contact tracker will phone or text you. You will be interviewed by a trained advisor about your recent whereabouts. You will likely be asked to self-isolate immediately.

We're Going Back To School

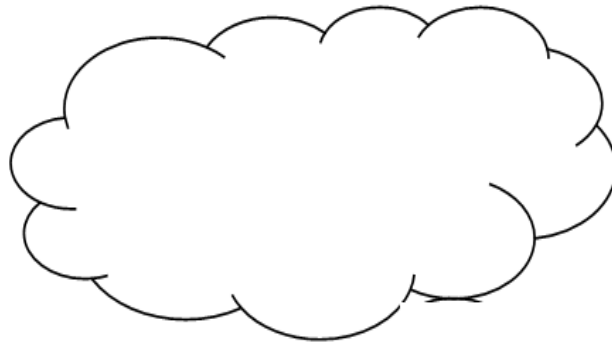


Meet the staff in your child's bubble/group or group

Each bubble/group will be given a colour. In each bubble/group there will be 2 staff and up to 8 - 2 year old children and 2/3 staff with 26 - 3 year old children. They will be allocated a classroom and can **NOT** mix with other bubble/groups except if Staffing is low temporary/supply staff may move across different rooms and maintaining social distancing.

Children may be allocated different key workers and may not be in the same bubble/group as their friends.

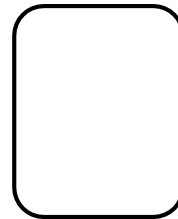
Your child is in



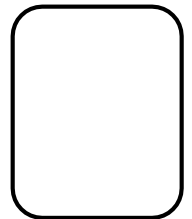
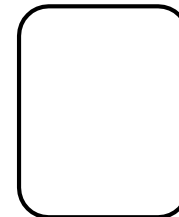
bubble/group

Session days and time

Days	Drop off time	Collection time



----- and ----- will be the staff in red bubble/group.



Organisation for dropping off and picking up

The start and end of the school day will be staggered to ensure the safety of all children and parents, this means limiting the amount of people on the school site at any one time.

3 year old children - drop off time: 8.45 a.m, pick up time: 2.45 p.m.

2 year old children drop off time: 9 a.m, pick up time: 3.00p.m.



Please note only 1 adult will be allowed on site with your child while dropping off or picking up.



Please ensure that you adhere to the time given and practice social distancing and posters around the site.



All parents must use the hand sanitiser on entering the playground and on leaving the playground. There are hand sanitising stations in place at both points of entry and exit.



Back exit date. Please use this gate if your child is going to be late.

Each coloured bubble/group will have a designated entrance. This is via Brearley Street and is either Entrance 1 or Exit 2 on Hospital street. You will need to drop off and collect your child from the same entrance but leave through Exit 2.



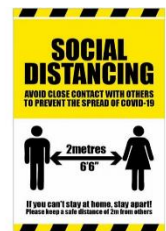
Entrance 1
Brearley Street



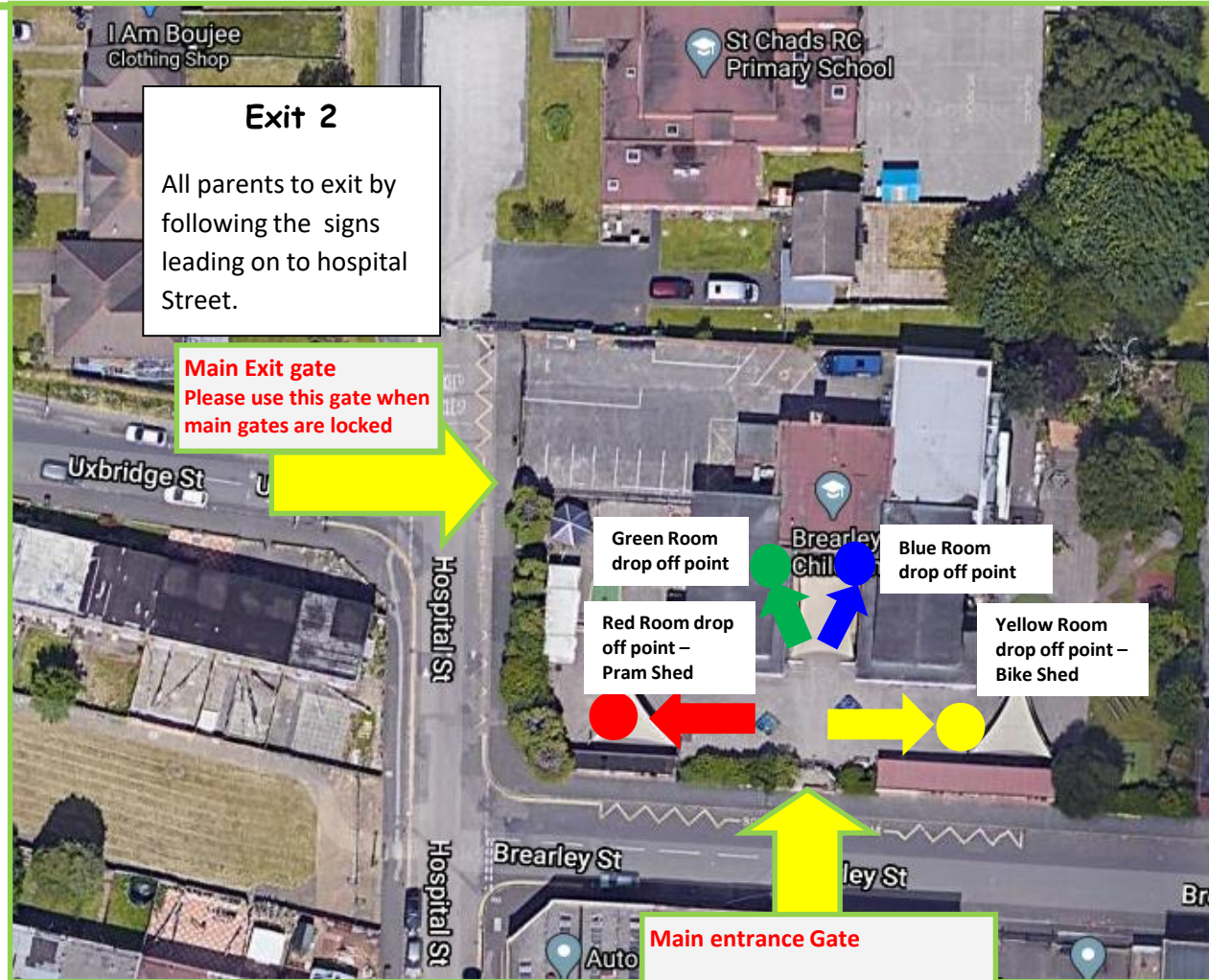
Exit gate 2
Hospital Street
Back exit date. Please use this gate if your child is going to be late.

There is a one way system in place. All parents and children must follow the arrows and exit the setting through the car park on to Hospital Street.

The members of staff from your child's bubble/group will be waiting for you at the classroom fire exit door. You must keep a 2 metre distance from staff during hand over. If your child becomes upset you will be asked to wait at a designated space until all the parents have entered and staff can attend to your child.



Brearley Nursery School Drop off and Collection Route Map



Exit onto Hospital Street for ALL parents



Intercom system in place for visitors to site on rear gate

Entrance 1

2 year olds drop off and pick up point by fire exit doors in rooms
 3 year olds Drop off and pick up point- **Yellow room by bike shed**

Red Room by pram shed

Behavior and Expectations

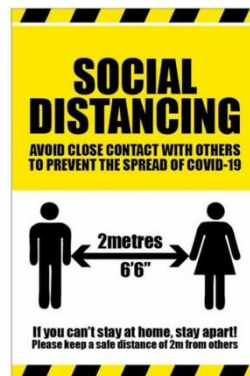
In light of the current pandemic of COVID-19 and the reopening of school, we have added what we think are key points to our Behaviour Policy to keep the children and staff safe whilst in school.

To enable to keep our children safe, there must also be temporary rules which will aid our success in this. As we know with young children social distancing is a difficult concept. When sending your child to nursery it is important to understand that we can not guarantee social distancing amongst young children, however will put lots of strategies in place to encourage children to play in smaller groups and maintain regular hygiene through hand washing.

The new 'rules' are as follows:

- Children will be taught about personal space and why we need to keep our 2 metre distance from others.
- Children will be taught about hygiene, why it is important, how they can manage their own hygiene, and how they can support their teacher and other pupils within their 'bubble/group' to maintain good hygiene standards.
- Children will be encouraged to play in own group.

Children will see lots of posters about social distancing around the setting which we will discuss and explain when they return to nursery.



Prepare your child for what to expect at nursery

Each bubble/group or group has been allocated a classroom. They can not mix with other bubble/groups of children. Therefore will remain in this classroom throughout the day.



Soft furnishings have been removed and the amount of resources available in each area are limited. This is important to ensure all equipment can be cleaned on a daily basis.

The number of chairs around each table are reduced to discourage children from gathering in large groups.



The floor has been sectioned off to remind children to keep at a safe distance during circle time sessions



Children can still play outdoors. However they will have allocated timeslots to use outdoors. The garden area, slide and secret garden will be sectioned off for each bubble/group or group. They can only use the allocated area of the garden. After a week the bubble/group or group will rotate to a different area. Equipment will be cleaned before each use.



HYGIENE

There will be a queuing system in the toilets for children to wait until there is a free toilet or sink



There are lots of posters to show children how to wash their hands effectively. Please practice this with your child at home using the hand washing song that is on our school website.



Children will be encouraged to wash their hands with soap and water for 20 seconds and dry thoroughly, cleaning their hands on arrival at school, before and after eating, and after sneezing or coughing.



Each room will have an allocated station with hand sanitiser available.

Children will be encouraged to use a tissue or elbow to cough or sneeze and use bins for tissue waste ('catch it, bin it, kill it').

WHAT WILL HAPPEN IF THERE IS ANY ILLNESS?

Firstly, if your child becomes ill in school, then they will be isolated in the medical room and you will be asked to collect them as soon as possible. If you are returning to work you need to have arrangements in place in case this was to happen.

Children's temperatures will be taken each morning on arrival, if their temperature is above 37.8 degrees they will be required to return home.

If your child is showing symptoms of COVID-19, (*a cough, high temperature or a loss of taste or smell*) you will be asked to call 111 and follow the advice given.

If any member of the bubble/group tests positive for COVID-19, the bubble/group will be shut down for 14 days.

If children are showing any symptoms of the virus, they should not attend school and should self-isolate for 7 days. You should contact the school to inform us that this is the case.

If your child is ill for any other reasons, eg. vomiting, you will be advised by a member of staff as to when the child can return to school.

If a staff member becomes ill for any reason, the bubble/group will be shut down for the period of their illness. You will be advised of this by text message by 8.15am on the first morning of the sickness, then any subsequent days you will be informed by 4pm the day before

WHAT WILL HAPPEN IF ANYONE IN MY HOUSEHOLD HAS SYMPTOMS?



COVID-19 - Self-isolation

If anyone in your household develops symptoms. Your child should not attend school but should self-isolate for 14 days from the onset of symptoms and follow the following steps:

- Inform nursery of the reason for absence i.e. household symptomatic
- Household member with symptoms to arrange to be tested
- If the household member's test result is positive, 14 days isolation must be completed by all other household members
- If the outcome of the test results is negative, the self-isolation ends for the household members provided they have not developed symptoms during the isolation period- (you will receive a text confirmation from PHE, please bring to school to show)
- If your child who is self-isolating due to a positive household member develops symptoms during the isolation period, they should arrange to be tested and self-isolate for 10 days from the onset of symptoms.



PPE

Staff may be wearing PPE when you drop off and collect your child from nursery if they need to make close contact with others. We will teach the children about the PPE and explain why we might need to use them during their first day back.



We have been advised that it is not necessary for the children to wear masks, and in doing so could put them at more risk, as they would fiddle with the mask and keep touching their face and eye areas. **PLEASE DO NOT SEND YOUR CHILD INTO SCHOOL WITH A MASK.**

LUNCHTIMES

2 year olds will be having lunch in their classroom remaining in their bubble group. While 3 year olds will have their meal in the dining room.



BREAKFAST AND AFTERSCHOOL CLUB

Breakfast and afterschool club currently is only for children at Brearley Nursery School. We are currently not providing breakfast and afterschool club for children attending other primary schools.

SPARE COTHES AND NAPPIES

If your child requires spare clothes or nappies, these will need brought in for the week and kept at nursery.



MEDICAL NEEDS

If your child has medication in school this will be kept within their bubble/group classroom. Can you ensure nursery has a named and a up to date inhaler supplied for your child if they require one.

If your child needs to be given prescription medication to reduce their temperature such as Calpol, Paracetamol or Ibuprofen we will be asking you to collect your child and keep them at home as this is one of the symptoms for Coronavirus.



No toys from home

We are requesting that your child does not bring any toys in to nursery. We are trying to limit any contamination from different settings, we will also not be sending children's work home.



COMMUNICATION WITH NURSERY

If you need to speak to a member of staff, you can contact them on: [0121 359 2309](tel:01213592309) and a telephone conversation can be arranged.



If your child has an accident at nursery, staff will contact you via telephone to explain the incident and give you an update on how your child is doing. You will not be required to sign an accident form.

We will mainly email letters to you, please give your email address to room staff, we will also update parents via our Groupcall text message service. It is important you update your contact numbers to receive nursery updates.

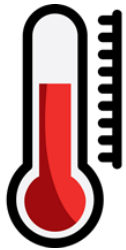


Do **NOT** send your child to nursery if they are feeling unwell.

If anyone in your household displays the following symptoms the household must isolate for 14 days.



A continuous cough



High temperature



Loss or change of taste or smell

Engage with the NHS Test and Trace process

At Brearley we understand the NHS Test and Trace process and how to contact our local [Public Health England health protection team](#). As Parents/Carers you will need to be ready and willing to:

- [Book a test within 3 days](#) if you or your child are displaying symptoms. Your child must not come into the school if they have symptoms, and will be sent home to self-isolate if they develop them in school. All children can be tested, including children under 5, but children aged 11 and under will need to be helped by you as parents/carers if using a home testing kit.



- [Provide details](#) of anyone you or your child have been in close contact with if they were to test positive for coronavirus (COVID-19) or if asked by NHS Test and Trace

- [Self-isolate](#) if you or your child have been in close contact with someone who tests positive for coronavirus (COVID-19), or if anyone in your household develops symptoms of coronavirus (COVID-19)

Anyone who displays symptoms of coronavirus (COVID-19) can and should get a test. Tests can be booked online through the NHS [testing and tracing for coronavirus website](#), or ordered by telephone via NHS 119 for those without access to the internet. Essential workers, which includes anyone involved in education or childcare, have priority access to testing.

CONTACT US

Brearley Nursery School

Brearley Nursery School

Brearley Street

Newtown

Birmingham

B19 3XJ

Phone: 0121 675 2309

E-mail: enquiry@brearley.bham.sch.uk